

## Non Audit Locking Units | Operation Instructions

### Important Notes

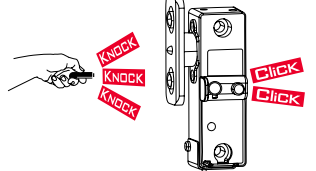
- Change the default Setup Code (12345678) to enable lock operations and setting of Unlock Codes.
- Setting of Setup Code and new Unlock Code should be done in a secure environment. No personal data (birthdays, IDs etc.), or any other data that can be associated with the code holder is to be used as an Unlock Code.
- The new Setup Code must be memorized or stored in a safe place for future setting of Unlock Codes or use of additional KnockKeys.
- A successful registration of a new code is indicated by a double click from the Locking Unit. Otherwise the previous setting remains.
- The same **Mounted Keypad** may transmit the 6-8 digit Setup Code as well as 4-8 digit different Unlock Codes.
- Setup Code and Unlock Codes should not start with "0".
- Each Unlock Code should be transmitted by the KnockKey that set the Unlock Code.
- Each Locking Unit may be set to operate by several Unlock Codes (2000 codes max) or KnockKeys.
- To Reset the Locking Unit and delete all Unlock Codes, change the Setup Code to "12345678".
- If a Quick Code is set, BEWARE that the Locking Unit may be unlocked by anyone if a set KnockKey is lost or stolen.
- Low Battery:**  
flashing of red backlight indicates that the KnockKey's battery is low.  
Locking Unit's delayed unlocking and red light flashing, indicate that the Locking Unit's battery is low.  
A CR2 Lithium Battery for the KnockKey and 123A Lithium Battery for the Locking Unit manufactured by Duracell, Energizer or Panasonic are recommended.

### Basic Setup

#### Change Setup Code (Change Setup Knockkey)

Setup code must be 6-8 digits.  
(Factory default is 12345678)

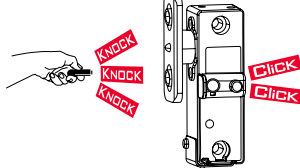
Setup Code: 0 1 enter    2 4 5 4 4 2 9 5 enter    New Setup Code\*: 4 2 0 0 4 5 enter    New Setup Code\*: 4 2 0 0 4 5 enter



#### Add New Unlock Code and Knockkey

Code must be 4-8 digits.

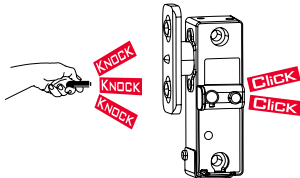
Setup Code: 0 2 enter    2 4 5 4 4 2 9 5 enter    New Unlock Code\*: 4 5 0 4 enter    New Unlock Code\*: 4 5 0 4 enter



#### Set Lock Battery Counter

Set only after a new battery was installed.

Unlock Code: 0 4 enter    4 5 0 4 enter



#### Change Unlock Code

Unlock Code: 9 9 enter    4 5 0 4 enter    New Unlock Code\*: 7 1 2 2 enter    New Unlock Code\*: 7 1 2 2 enter



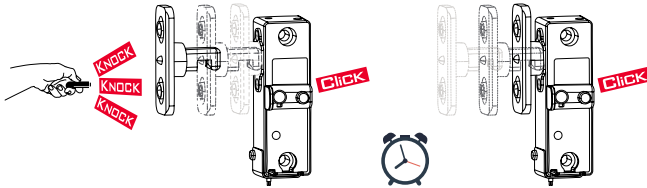
\*Codes should not start with '0'. If a code that starts with '0' was set, knocks will not be generated and the Knockkey will flash for 4 seconds.

## Operation

### Unlock with Auto Relock

Opening Code

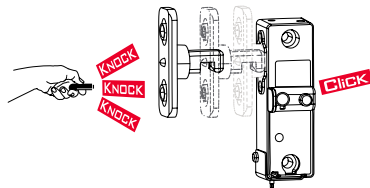
3 1 1 4 5 enter



### Unlock & Stay Unlocked

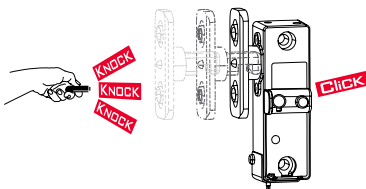
Opening Code

0 enter 3 1 1 4 5 enter



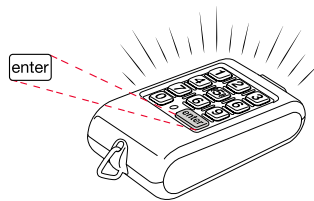
### Relock Only

0 enter enter



### Clear Knockkey's Input

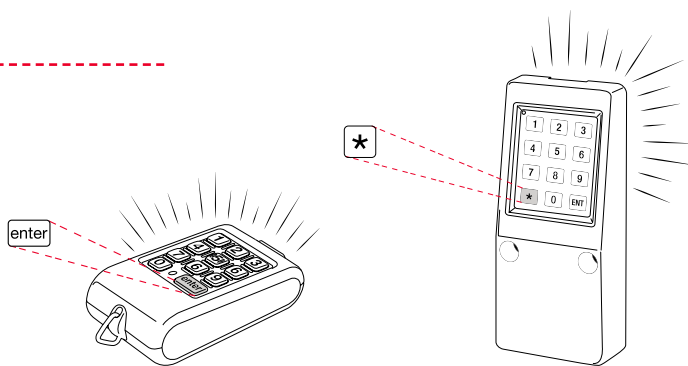
Press & hold "enter" for 2 sec. until led flashes.



### Turn On Backlight

Press & hold "enter" for 3 sec.

Turn On Backlight MK204: Press \*.

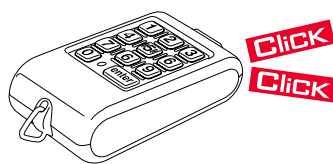


### Quick Code\*

#### Preset Quick Code

Opening Code

0 0 1 enter 4 5 0 4 enter



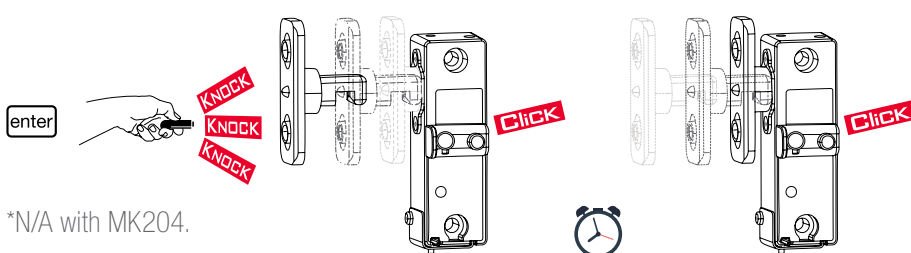
#### Clear Quick Code

0 0 0 enter



#### Unlock with Quick Code

Press "enter".



\*N/A with MK204.

## Advanced Setup\*

### Auto Relock Delay

Settings: 0=stay open, 1=2 sec, 2=4 sec, 3=6 sec, 4=8 sec, 5=10 sec, 6=20 sec, 7=30 sec, 8=60 sec, 9=90 sec.

Settings

0	1	2	3
0	8	4	enter
5	6	7	8
9			

Setup Code

2	4	5	4	4	2	9	5	enter
---	---	---	---	---	---	---	---	-------

### Delete KnockKey from the Locking Unit

Setup Code

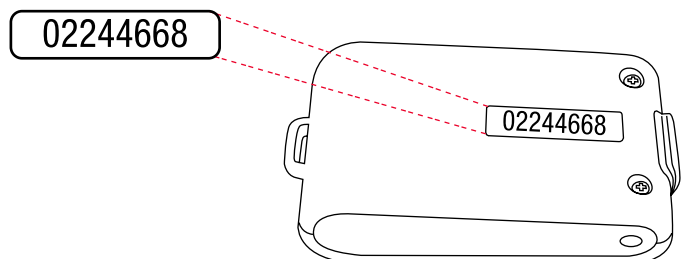
0	3	enter						
2	4	5	4	4	2	9	5	enter

Key Serial Number

0	2	2	4	4	6	6	8	enter
---	---	---	---	---	---	---	---	-------

Key Serial Number

0	2	2	4	4	6	6	8	enter
---	---	---	---	---	---	---	---	-------



\*Setting only by Setup KnockKey.