

WI-KEY LITE – USER MANUAL

Contents

Wi-Key Lite Application.....	1
Getting Started.....	2
Adding a lock.....	3
Unlocking A lock.....	5
Inviting users.....	6
Registering as a user to an existing company.....	7

WI-KEY LITE APPLICATION

The Wi-Key™ Lite app is a mobile application that seamlessly connects to the user’s Wi-Key™ Smart Padlock via Bluetooth Low Energy (BLE) technology. With the app, you can conveniently control and monitor access to your padlock and grant access to authorized individuals with a simple tap on your mobile device.

This manual will guide you through operating the application.

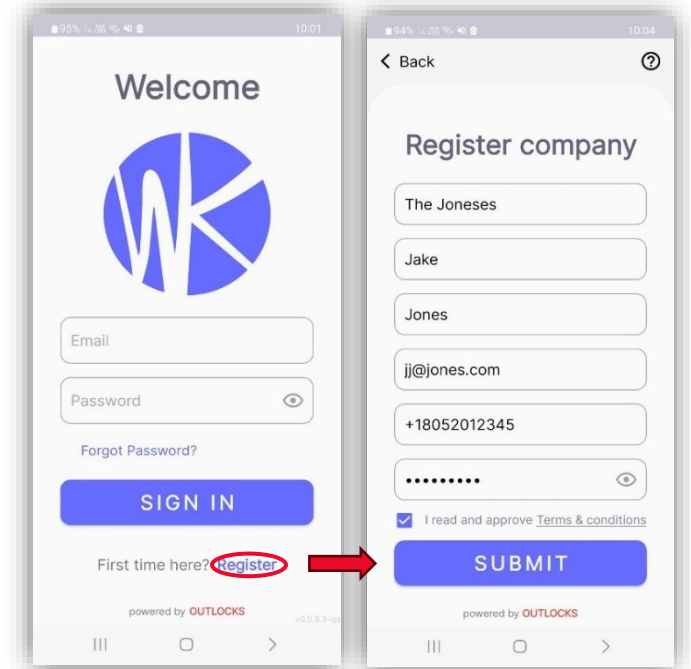
© 2024 OUTLOCKS

This document contains proprietary and confidential information of OUTLOCKS and shall not be reproduced or transferred to other documents, disclosed to others, or used for any purpose other than that for which it is furnished, without the prior written consent of OUTLOCKS. It shall be returned to the respective OUTLOCKS companies upon request.

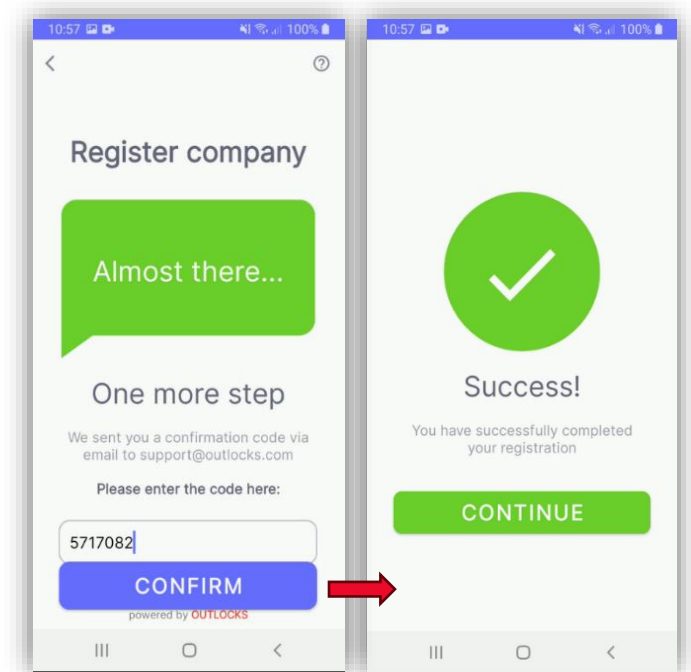
The trademark and service marks of OUTLOCKS, including the OUTLOCKS mark and logo, are the exclusive property of OUTLOCKS, and may not be used without permission. All other marks mentioned in this material are the property of their respective owners.

GETTING STARTED


1. Download the Wi-Key Lite app from Google Play or Apple's AppStore and install the app on your mobile device.
2. Launch the Wi-Key Lite app.
3. Tap 'Register'
4. Enter your Company's name and personal details.
 - The Company name may be your business name, last name, etc.
 - Enter your phone number in an international format including the country code.
 - The password should be at least 8 characters long and contain upper case, lower case, digits, and special signs.
 - Review the app's Terms & Conditions, and check the related checkbox.
5. Tap 'Submit'

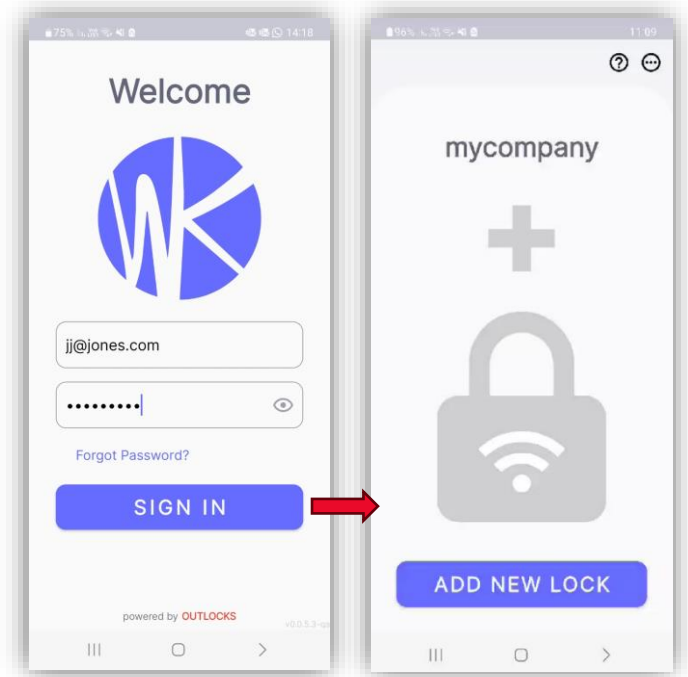


6. A confirmation code will be sent to the email account you registered. (If you cannot find the email, please check your spam or junk mail)
7. Enter the confirmation code and tap 'Confirm'.

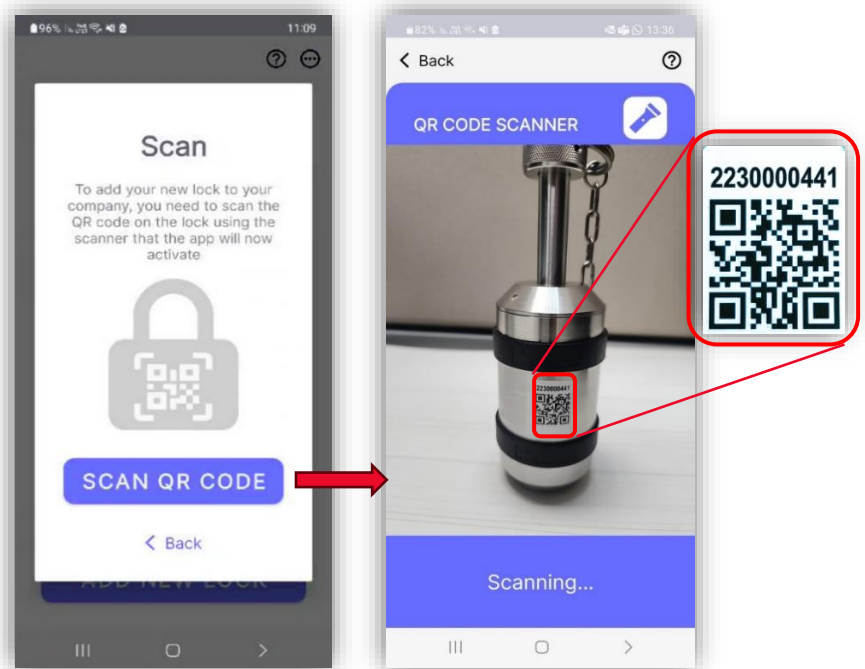



ADDING A LOCK

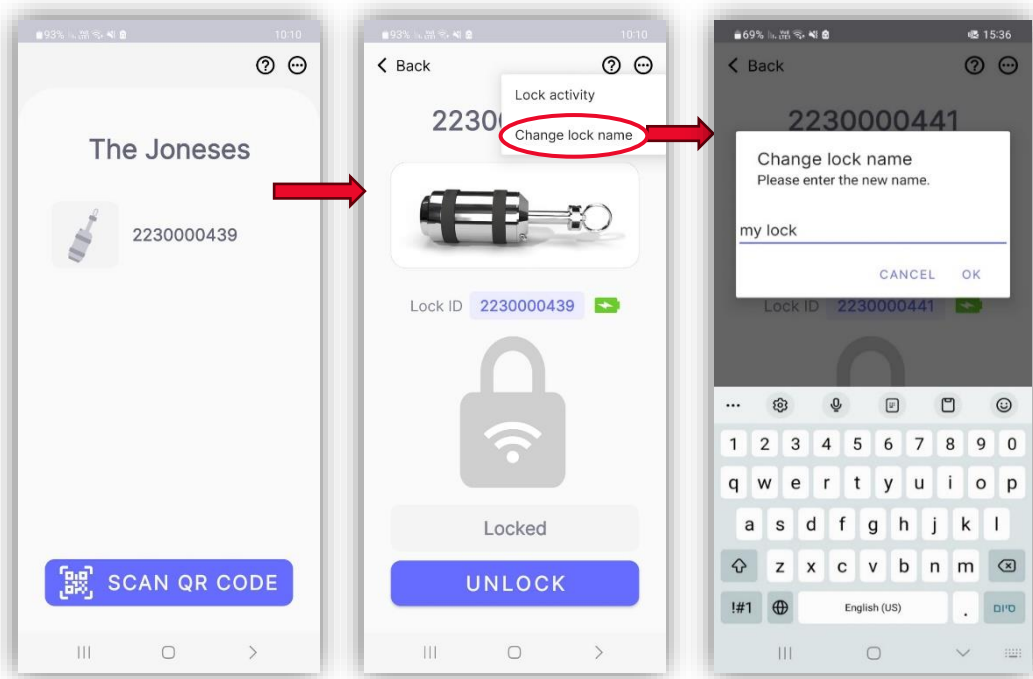
1. Log in to the Wi-Key Lite app with your registered email and password.
2. If no locks are registered, the Add new lock screen will be displayed. Tap 'Add New Lock'.
3. You can also add a lock from the main menu by  tapping 'Add new lock'.



4. Tap 'Scan QR Code' and scan the QR code on the lock.



5. To change the lock's name, tap on the lock's number from the list to enter the lock's screen.
6. On the lock's page, tap the main menu icon  then select 'Change lock name'

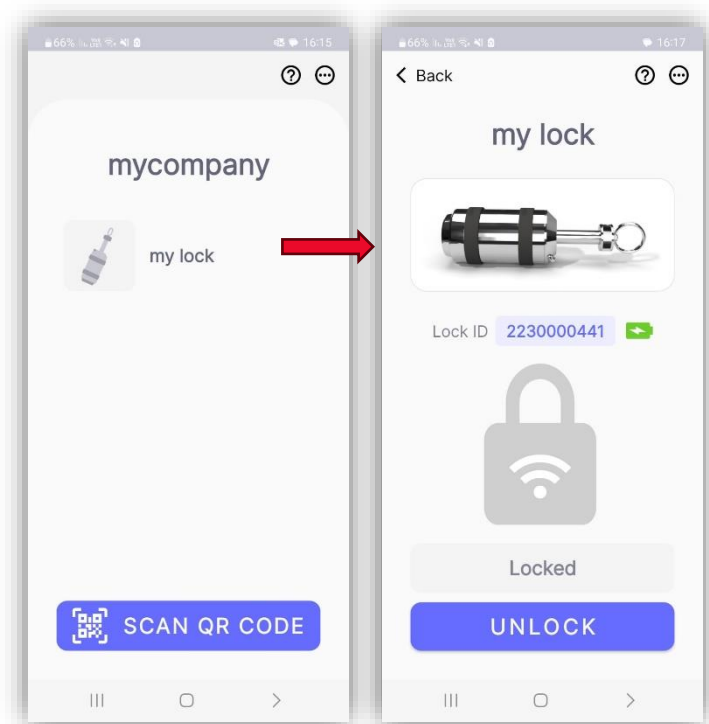


7. Enter the new name and tap 'OK'.
8. Once the lock's name is changed, a confirmation message will appear on-screen.

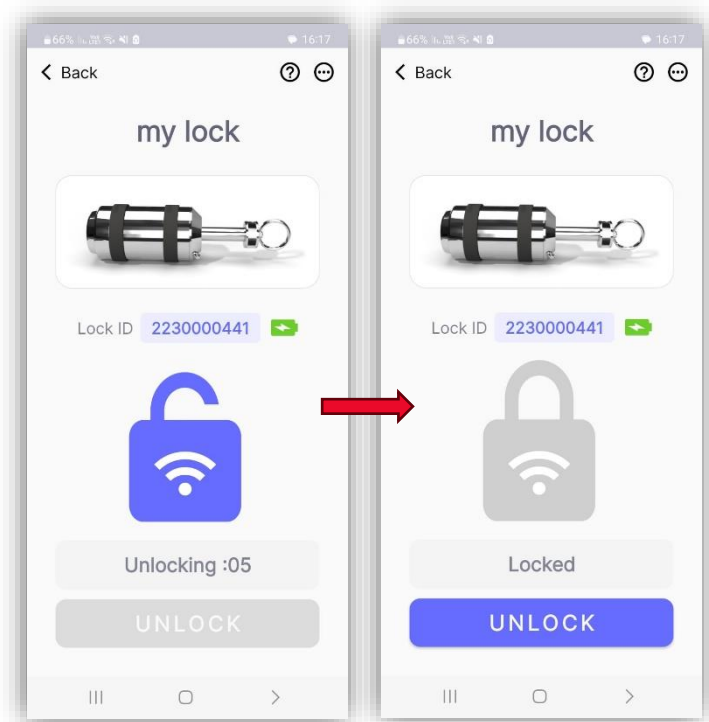


UNLOCKING A LOCK


1. In the locks list, tap the lock's name or number.

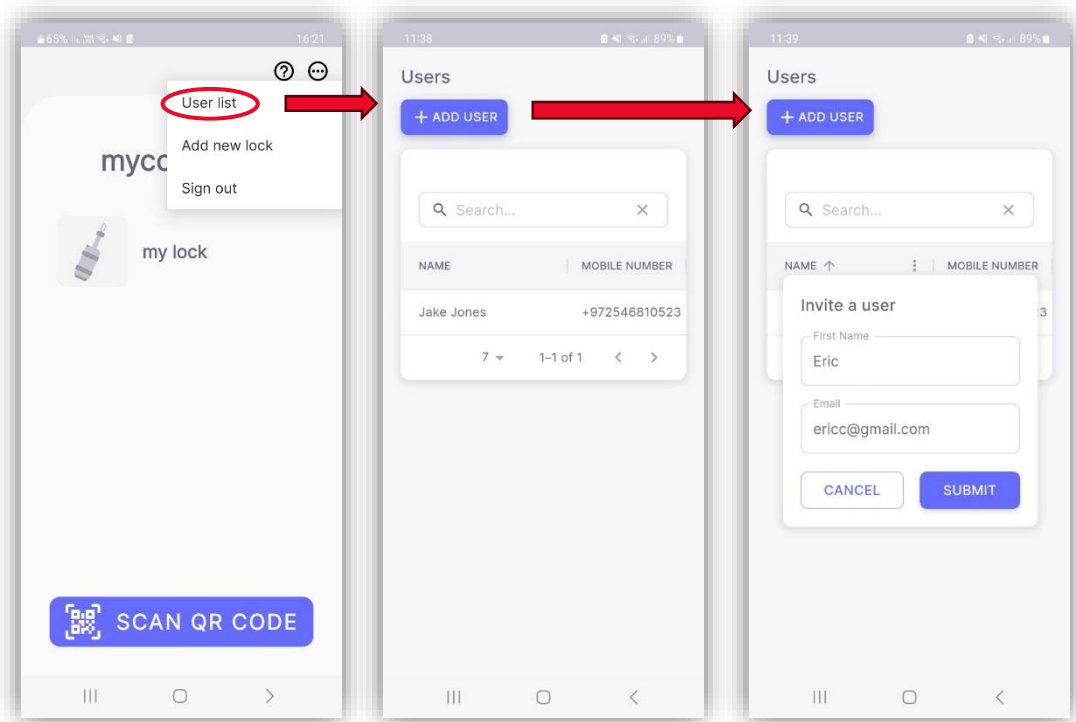


2. Tap 'Unlock'
3. Once the lock is unlocked, the icon will change to purple and a countdown to re-locking will be displayed. Once the icon turns back to gray, the lock is ready to be locked by inserting the bolt to lock.



INVITING USERS

1. In the app's main menu  tap 'User list'.
2. In the User list screen, tap 'Add User'.
3. Fill in the new user's first name and email address and tap 'Submit'.
The user will receive an invitation at the registered email address.



REGISTERING AS A USER TO AN EXISTING COMPANY

1. Open your email and find the invitation sent to you by the company owner. (If you cannot find the email, please check your spam or junk mail)
2. Accept the invitation email **on the designated mobile device**. This will direct you to the registration page.
3. Update your full name and mobile number. For the number, use the international format including the country code.
4. Review the app's Terms & Conditions and check the related checkbox.
5. Tap 'Join'.
6. Enter the confirmation code received by text message.
7. create a new password.
The password should be at least 8 characters long and contain upper case, lower case, digits, and special signs.
8. Tap 'Submit'.

You can now download the app and login using you email and password.

